



CROSS COUNTRY  
GREENHOUSES

HOBBY AND CUSTOM





Our greenhouses are built to outperform and outlast the competition.

For over 70 years our greenhouses have been the choice for gardeners around the world. Known for our strength and versatility, every model carries a minimum **85 mph wind load** and **32 lbs snow load**. We can upgrade to meet any building code and custom modifications are welcome.







Imagine designing a greenhouse that will last a lifetime. Your choice of style, glazing, pitch and decorative features are just a few of the options available to you.









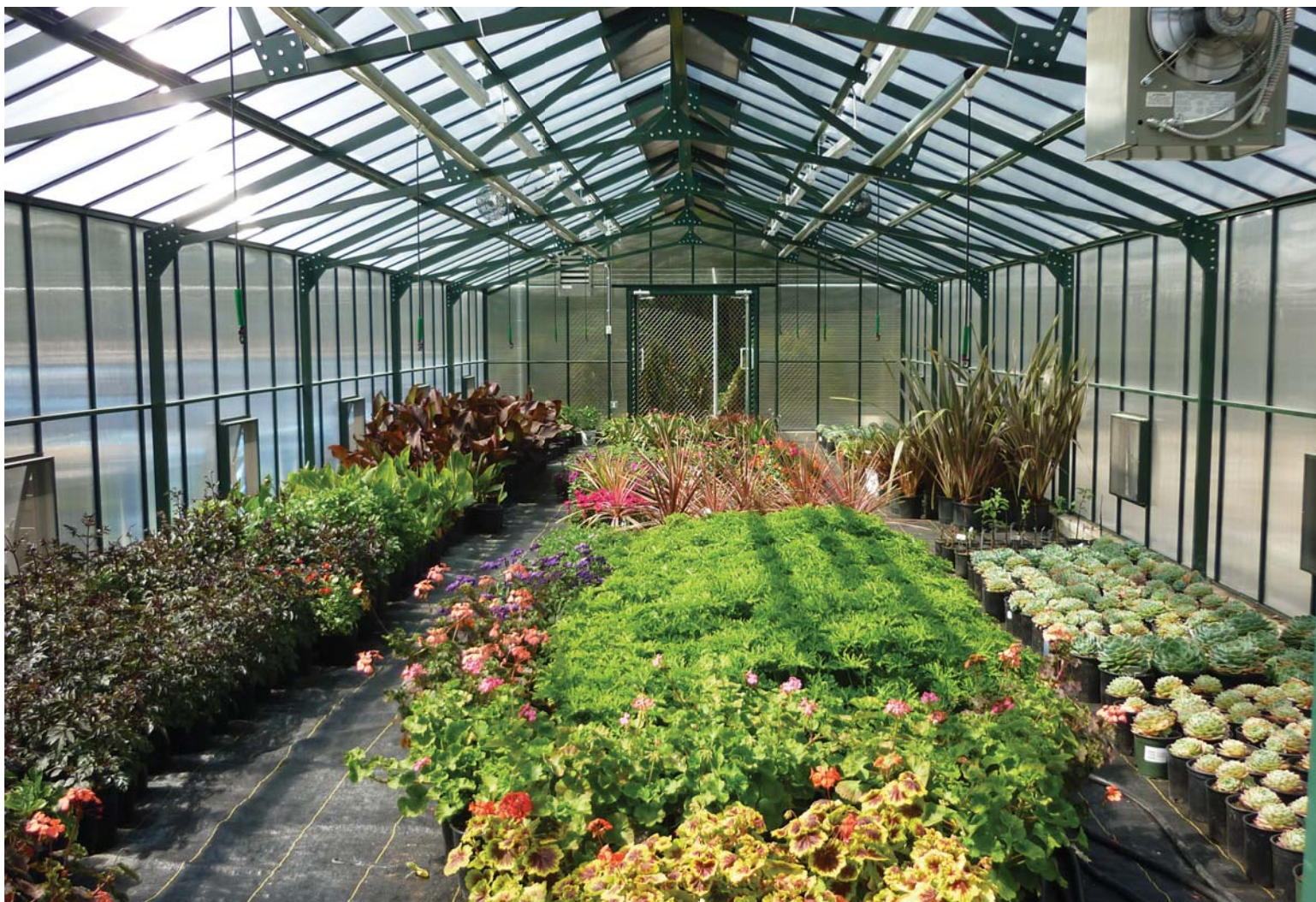
## Cape Cod Series

The sophisticated style of the Cape Cod adds refinement to any setting. With a steep 45 degree sloped roof, it is the ideal greenhouse for high snow areas as the snow will easily shed.









## Traditional Series

The 23 degree sloped roof has made the Traditional model the most popular model since 1951. The lower pitched roof provides the maximum amount of natural light while minimizing heating costs due to less air volume.









## Cottage Series

An elegant Victorian look with a slope of 35 degrees allowing for a taller ridge height in your greenhouse. The Cottage is designed to accommodate hanging baskets and tall plants and matches many common roof styles and designs.

















## Building Attached

Attached greenhouses are designed to look like an original part of your building while also having ease of access to water and power. Customize your attached greenhouse by matching your roof line or choose a custom color frame so that it integrates seamlessly.









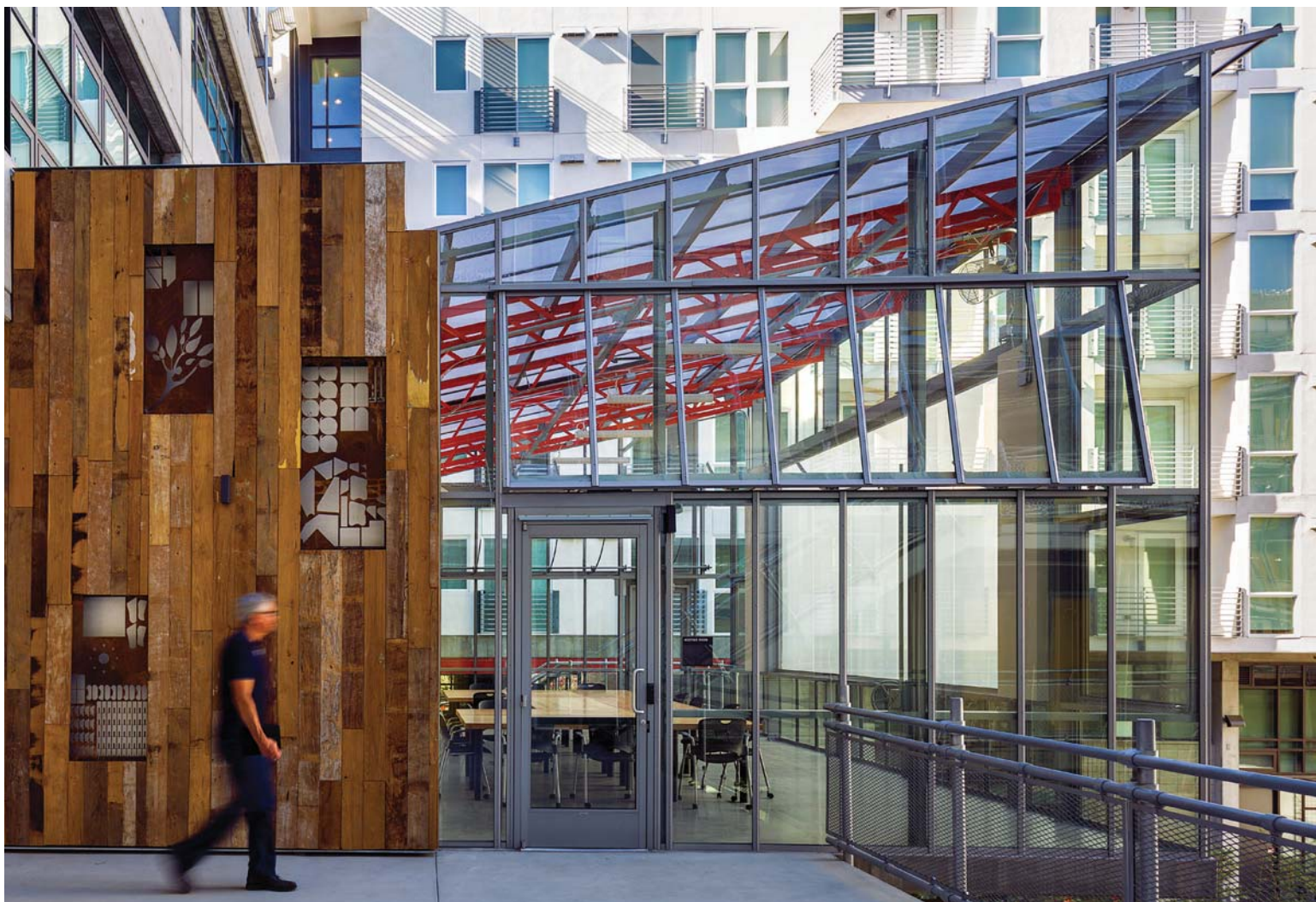
## Pacific Series

The elegant Pacific greenhouse with its classic 23 degree curved roof has one continuous bar that runs from the base to the ridge. This provides a minimalistic look and simplifies installation. Available in both tempered glass and twinwall polycarbonate.









## Custom Greenhouses

Design a custom greenhouse built just for you. If you can dream it, we can build it! Connect with our team about your design needs.









## Commercial Greenhouses

Not your typical hoop house or steel tube greenhouse, our commercial greenhouses are permanent and maintenance free. Ideal for schools, institutions, retail centers and nurseries. Ask about our project supervisors who will lead your project from start to finish.









## Meridian Estate Greenhouses

The Meridian Estate Greenhouse line is a luxury offering of conservatories, orangeries and extraordinary garden rooms. The size and shape of the Meridian greenhouse can be designed to match the architecture of your home. Complete environmental control systems allow you to enjoy every season.

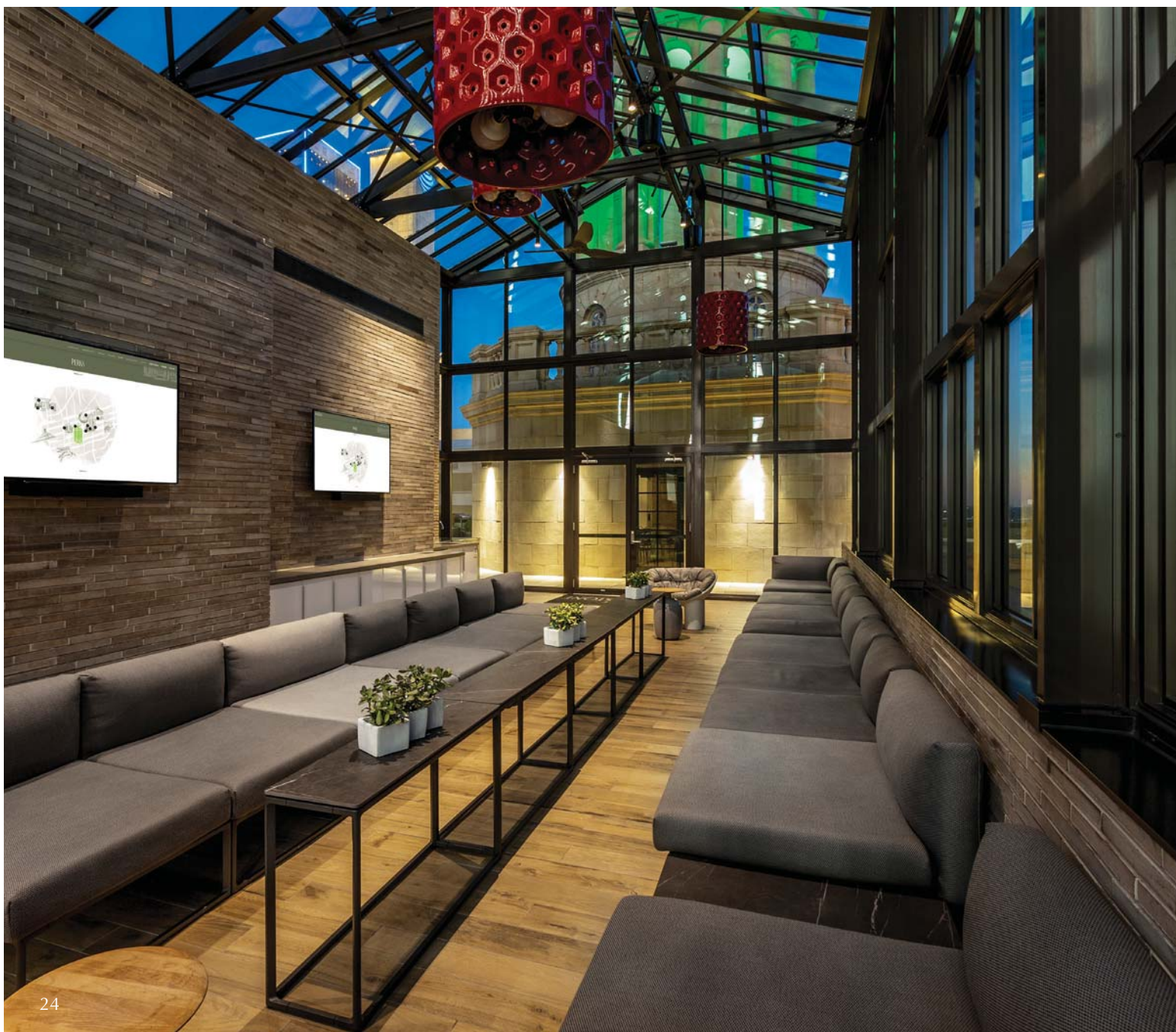




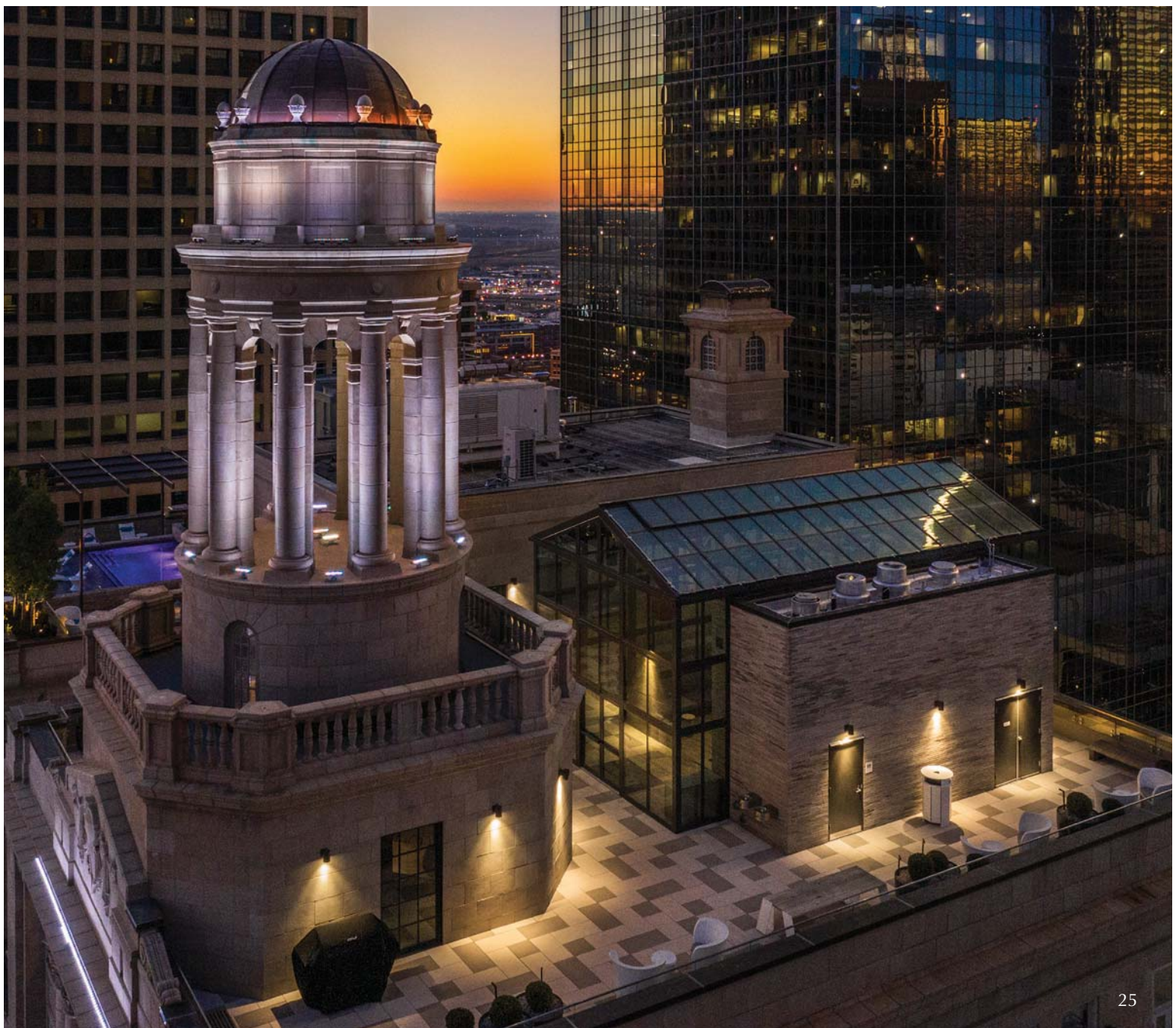






























# Framing Systems



## Cross Country Frame

The standard greenhouse Cross Country frame is ideal for hobby residential and commercial greenhouses, providing a minimum wind rating of 85 mph and minimum snow loads of 32 lbs per sq. ft.

Ask about our upgraded decorative pressure cap and one-piece glass for a more substantial looking greenhouse without the higher cost.

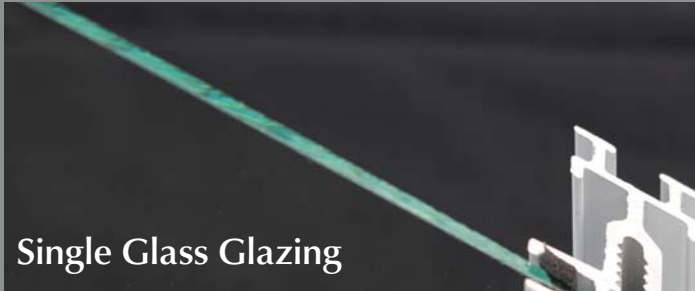


## Meridian Framing Systems

The Meridian Estate tubular frame systems vary in size and bespoke design options. These frames offer a more substantial appearance as well as structural strength without the look of exposed exterior hardware.

Thermally upgraded, the framing system allows for enjoyment in any season for living and growing enjoyment. Great care is taken to create a finished appearance to provide a high style effect.





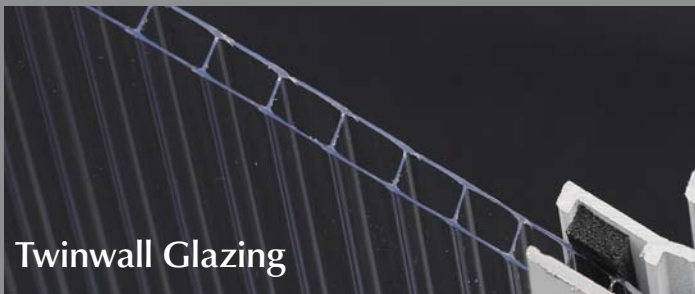
### Single Glass Glazing

Our tempered single glass offers full light transmission for greenhouse gardeners that want the capability to control all growing variables, and the safety of tempered glass to minimize any possible breakage. 3 MM (R Value) .90.



### Double Glass Glazing

Our tempered insulated double glass has all the benefits of single glass with an insulation factor optimized for full service use in cold climates. 16 MM (R Value) 2.04.



### Twinwall Glazing

Our twinwall polycarbonate provides the benefits of 50% better insulation compared to single glass, 80% light diffusion for built in shading and cooling, and is virtually unbreakable. 6 MM (R Value) 1.59, 82% Light Transmission.



### Fivewall Glazing

Fivewall polycarbonate glazing has all the benefits of twinwall polycarbonate, while offering an insulation factor that is 80% more efficient than the twinwall polycarbonate and 50% more efficient than double glass. 16 MM (R Value) 3.0, 62% Light Transmission.

Other tempered glass and polycarbonate options available upon request including Low-E, tinted, opal and bronze.



## Pricing Guide

PAGE	MODEL	DESCRIPTION	EST. PRICE
<b>Cover</b>	<b>Cottage 12'x20'</b>	Double glass walls with a Fivewall roof, storefront door, exhaust fan package and decorative pressure cap.	<b>\$40,700</b>
<b>2</b>	<b>Cottage 16'x30'</b>	Twinwall with exhaust fan system and 2 doors.	<b>\$31,200</b>
<b>3</b>	<b>The Providence 10'x12'</b>	6mm single piece glass, decorative pressure cap, wrap around gutter, transom, ridge cresting, louvres and wagon wheel.	<b>\$33,100</b>
<b>4</b>	<b>Cape Cod 10'x18'</b>	6mm single piece glass with double storefront door in side wall, 4 custom single side vents, decorative gutter and ridge cresting.	<b>\$36,200</b>
<b>5</b>	<b>Cape Cod 8'x12'</b>	Twinwall with custom single side vents.	<b>\$9,900</b>
<b>6</b>	<b>Traditional 8'x12'</b>	Single pane glass with extra roof vents.	<b>\$7,700</b>
<b>7</b>	<b>Traditional 20'x60'</b>	Twinwall with double storefront door, double side vents and heaters.	<b>\$86,100</b>
<b>8</b>	<b>Cottage 8'x8'</b>	Lapped single glass.	<b>\$8,100</b>
<b>9</b>	<b>Cottage 16'x24'</b>	Fivewall with storefront door and exhaust fan package.	<b>\$37,800</b>
<b>10</b>	<b>Cottage 8'x12'</b>	Single glass walls with Twinwall roof, double storm door in side wall, decorative ridge cresting and custom single side vents.	<b>\$11,000</b>
<b>11</b>	<b>Cottage 18'x26'</b>	6mm single piece glass with storefront doors and custom single side vents.	<b>\$54,600</b>
<b>12</b>	<b>Gable Attached Cottage 14'x32'</b>	6mm single piece glass with storefront doors, double side vents, and decorative ridge cresting, pressure cap and gutters.	<b>\$62,400</b>



## Pricing Guide Cont'd

PAGE	MODEL	DESCRIPTION	EST. PRICE
13	<b>Traditional Lean-To 6'x20'</b>	Double glass lean-to with storefront door, decorative gutter, pressure cap and custom single side vents.	<b>\$28,000</b>
14	<b>Pacific 12'x18'</b>	Single pane glass, double storm door and custom single side vents.	<b>\$20,900</b>
15	<b>Pacific 20'x30'</b>	Twinwall, double storm door, exhaust fan package and heater.	<b>\$39,200</b>
16	<b>Custom Free-Standing Lean-To 16'x26'</b>	6mm single piece glass with and opal polycarbonate roof, motorized continuous side vents, storefront doors, exhaust fan package, custom colour, louvres and a tubular opening for a garage door. (Includes supervisor for installation).	<b>\$148,200</b>
17	<b>Custom Lean-To 18'x30'</b>	High performance Low-E double glass walls with a Fivewall roof, motorized continuous side vents, storefront doors, rotocrank windows, custom eave overhang and custom smart glass. (Includes supervisor for installation).	<b>\$161,800</b>
18	<b>Cross Country Commercial 16'x46'</b>	Fivewall with extra high side walls, reverse slope, 2 custom storefront doors and 2 motorized continuous side vents. (Includes supervisor for installation).	<b>\$360,600</b>
19	<b>Cross Country Commercial 32'x46'</b>	Custom university roof top laboratory with 6 double glass partitioned rooms, storefront doors, motorized continuous roof vents, exhaust fan packages and heaters.	<b>\$496,200</b>
20	<b>Meridian Free-Standing Lean-To 10'x12'</b>	High performance Low-E double glass with storefront door, custom single side vents, custom colour and eave overhang. (Includes supervisor for installation).	<b>\$105,900</b>
21	<b>Meridian Cape Cod 10'x16'</b>	High performance Low-E double glass with custom storefront door, decorative pressure cap, gutters, exhaust fan package and vestibule.	<b>\$102,000</b>



## Pricing Guide Cont'd

PAGE	MODEL	DESCRIPTION	EST. PRICE
22	<b>Meridian Gable Attached 18'x30' Conservatory</b>	High performance Low-E double glass conservatory with 6 pane sliding doors, jogged chimney, decorative ridge cresting and decorative gutter. (Includes installation).	<b>\$323,400</b>
23	<b>Meridian 10'x20' Conservatory</b>	High performance Low-E double glass with a storefront door, hipped roof, rotocrank windows, transom, and decorative ridge cresting. (Includes supervisor for installation)	<b>\$161,700</b>
24, 25	<b>Superior Meridian 20'x40' Conservatory</b>	High performance Low-E laminated double glass with extra high side walls, motorized continuous roof vents, storefront doors, and decorative gutters. (Includes installation).	<b>\$540,800</b>
26	<b>Meridian 20'x50' Estate Conservatory</b>	High performance Low-E double glass, motorized continuous roof vents, 4 custom double storefront doors, hipped roof, decorative ridge cresting, gutters and pressure cap. (Includes installation).	<b>\$546,400</b>
27	<b>Meridian 20'x40' Conservatory</b>	High performance Low-E double glass with vestibule, motorized continuous roof vents, double storefront doors, decorative wrap around gutter and custom slope hipped roof. (Includes installation).	<b>\$529,600</b>
28	<b>Meridian 18'x30' Conservatory</b>	High performance Low-E double glass with motorized continuous roof vents, storefront doors, exhaust fan package, decorative ridge cresting and wrap around gutters. (Includes installation).	<b>\$284,300</b>
29	<b>Meridian Gable Attached 18'x30' Conservatory</b>	High performance Low-E double glass with double storefront doors, motorized continuous roof vents, rotocrank manual windows and side wall decorative gutters. (Includes installation).	<b>\$245,300</b>
Back	<b>Pacific Lean-to 10'x24'</b>	Solid piece glass with vestibule, motorized continuous roof vents, hand crank continuous side vents, custom double storefront door, heater and custom colour. (Includes installation).	<b>\$145,000</b>



## Tips & Considerations

- Are there specific building requirements for wind and snow loads? Confirm with your local planning department.
- Do you require a permit?
- Thinking of a concrete foundation? A perimeter foundation is more economical. Add a layer of pea gravel, pavers or stones over a weed screen instead for your floor.
- Always confirm foundation dimensions. The dimensions vary depending on the size and glazing of the greenhouse.



- Additional costs to consider would be foundation, shipping, and utilities for your greenhouse. Installation could be outsourced but is not necessary. Most homeowners build our standard greenhouses themselves.
- Thinking of a raised foundation wall? Make sure to let us know the height so we can drop the door to the ground through the foundation for easy access.
- When situating your greenhouse, try to find a spot that receives 6 hours of sunlight in the winter. If possible, position the longest side of your greenhouse to face south.





Authorized Retailer

**800-322-4707**

**charleysgh.com**

17979 State Route 536, Mount Vernon, WA 98273

